



LHSimulations presents:

Pécs Pogány Scenery

LHPP – Pécs Pogány Airport

(FS2004)

General:

Pécs Pogány Airport is one of the five international airport in Hungary. The airport is located 10 km's from Pécs town. Pécs is the fifth largest city of Hungary, located on the slopes of the Mecsek mountains in the south-west of the country, close to its border with Croatia. It is the administrative and economical centre of Baranya county. Pécs has been selected to be the European Capital of Culture in 2010 sharing the title together with Essen and Istanbul. The city's motto is: "The Borderless City".

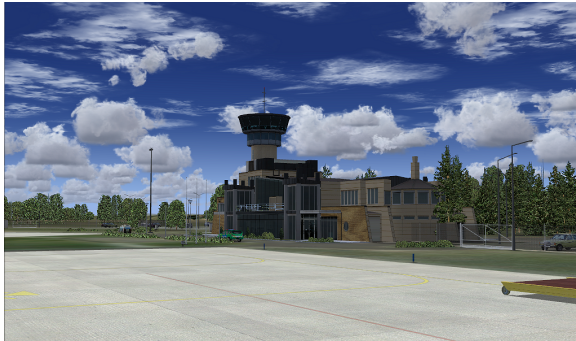
The airport was opened in 1907, but to his current place it was moved only on 1956. Mainly it was used for sport and hobby flying base. From 1994 helicopter ambulance had based themselves at the airport. As of April 2003, the local city owners and authorities have taken the time to build a new asphalt runway which is 1500 meters long and 30 meters wide. In 2004 the airport was able to install a instrument landing system and runway lighting. From the fall of 2005 to the spring of 2006 a new international terminal building was built for the opening ceremony of scheduled service from the airport. With this the airport was now able to join the international network of flights.

The airport has only one asphalt runway (16/34, 1500m/4900ft). Rwy16 is equipped with CAT I. ILS.

The scenery:

There is no default airport in FS2004. Only one freeware scenery existed for the airport created by our friend Alert. As we LHSimulations created our very first scenery, Sármellék, the community was eager to help and support us to continue our job. Middle of 2009 we have contacted the management of the airport and they kindly allowed us to visit the airport and to take as many Photos as we wanted. This opportunity allowed us to create a very detailed scenery with absolute equality to the reality. As this is our second scenery we were progressing much faster than before.

This scenery is currently available for FS2004. We are planning to create the scenery for FSX and for X-Plane but it will take time. (Check the forum for update, <http://www.lhsimulations.hu/forum/>)



The Team:

István Bíró (m814) : Textures and ground polys.

Sándor Tar (tsGucci) : 3D objects.

Tibor Kókai (Zlin142), István Jankovics (Papírzacsi) : Static aircrafts.

Zoltán Székely (pateszi) : 3D object, chopper trailer.

Boldizsár Fodor (Swift) : Photos.

Zoltán Mészáros (Zoli) : Textures.

Special Thanks:

We would like to thank the management of Pécs Pogány Airport for their support, especially to Mr. Márk Dragovác.

Thanks to Gábor Czinszky for the technical support.

Thanks to Dániel Lengyel (Admin) for the website.

Thanks to Balázs Lengyák for the webhost and ftp.

Thanks to Arno and ng4x (fsdeveloper community) for their help.

Installation:

1. Execute the installer file 'Pécs Pogány LHPP scenery FS2004.exe'!
2. Follow the instructions of the installer! Choose your FS folder!
3. Start the flight simulator
4. At settings execute the scenery library
5. Add to the library the 'LHPP' folder
6. Restart your Flight Simulator
7. Enjoy!

Contact:

For Support contact us on the LHSimulations forum:

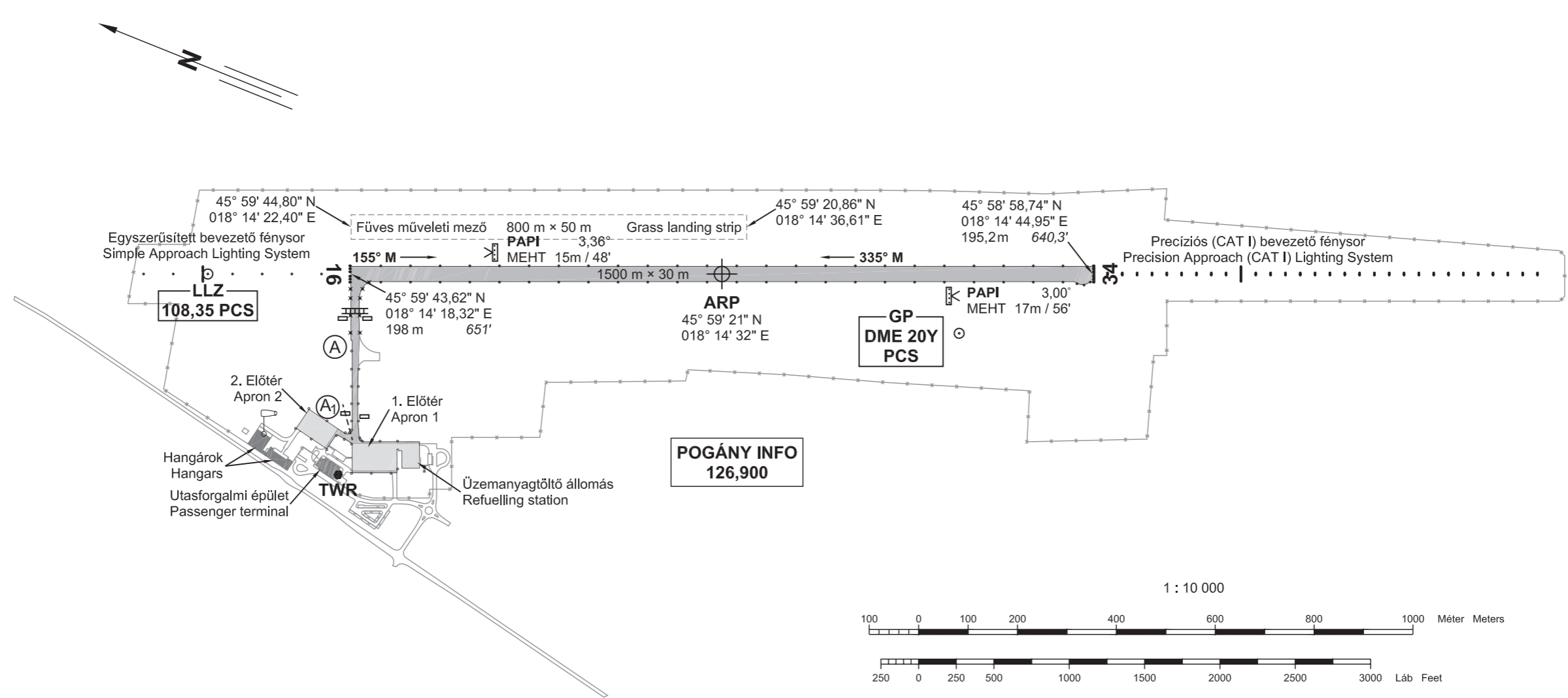
<http://www.lhsimulations.hu/forum/>

Email:

info@lhsimulations.hu

Charts:

On the following pages you can find charts for the airport.



A MAGASSÁGOK BALTI ALAPSZINTRE VONATKOZNAK
ELEVATIONS ABOVE BALTIC MEAN SEA LEVEL

MÁGNESES ELHAJLÁS 3° K Évi változás +0,1° (2005)
MAGNETIC VARIATION 3° E Annual change

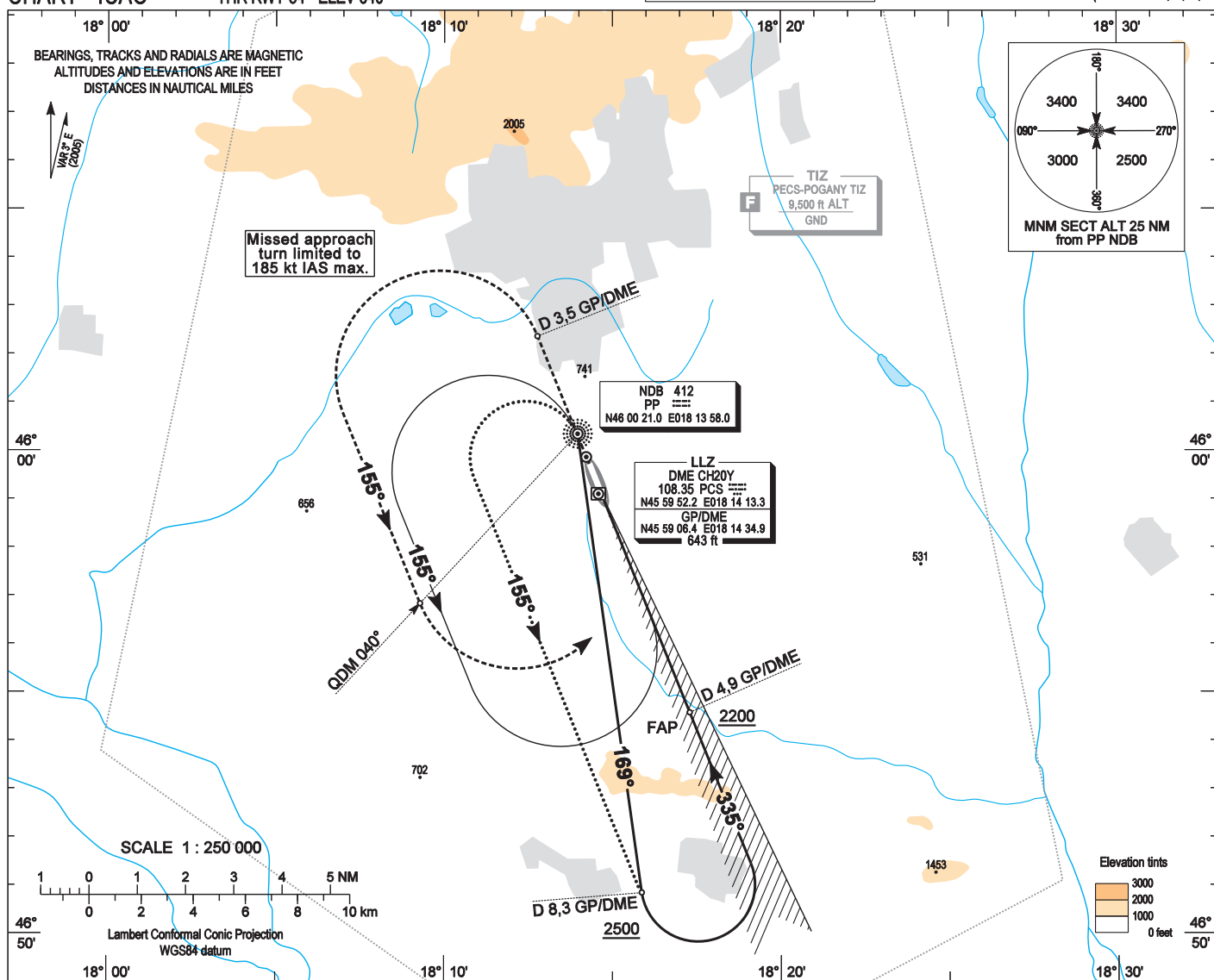
JELMAGYARÁZAT LEGEND			
	Aszfaltozott mozgási terület Asphalt movement area		Körsugárzó futópálya fények (szegély-, küszöb-, vég-) Omnidirectional RWY lights (edge-, threshold-, end-)
	Betonozott mozgási terület Concrete movement area		Gurulóút szegélyfény TWY edge light
	Szélzsák Wind indicator		Fényvisszaverő gurulóúti szegélyoszlop Retroreflective TWY edge marker
	Gurulóút jel Taxiway sign		Kivilágított gurulási eligazító tábla Illuminated taxiway guidance sign
	Gurulóút szakaszhatár TWY segment boundary		PAPI
	Gurulási várópont Taxi holding position		Épület Building
			Szervizút, közút Service road, public road
			Kerítés Fence

THE PAGE INTENTIONALLY LEFT BLANK

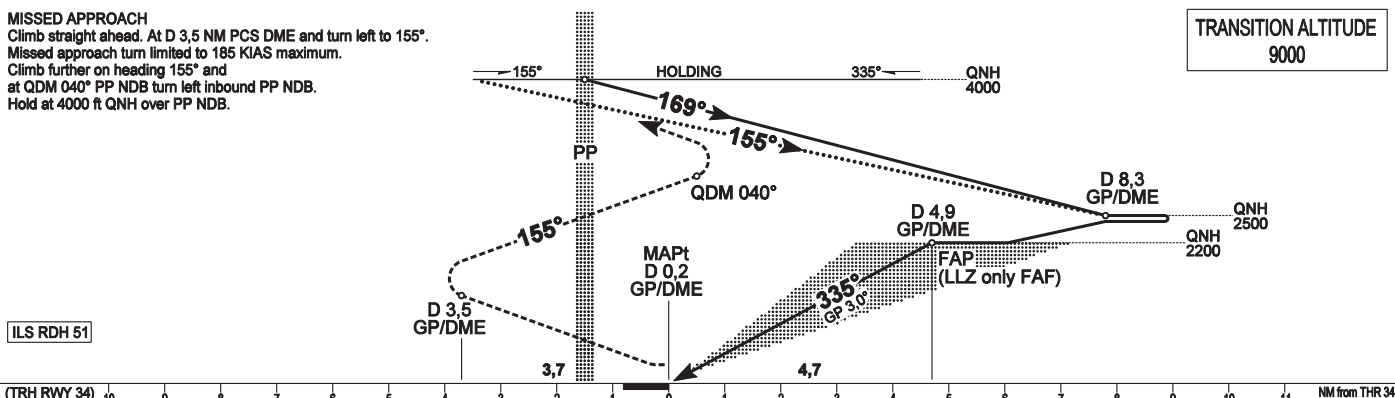
AIP HUNGARY

INSTRUMENT
APPROACH
CHART - ICAO

AERODROME ELEV 651

HEIGHTS RELATED TO
THR RWY 34 - ELEV 640POGÁNY INFO 126,900
BUDAPEST INFO (WEST) 125,500PÉCS/POGÁNY
ILS and LLZ only RWY 34
(ACFT CAT A, B, C, D)

MISSED APPROACH
Climb straight ahead. At D 3.5 NM PCS DME and turn left to 155°.
Missed approach turn limited to 185 KIAS maximum.
Climb further on heading 155° and
at QDM 040° PP NDB turn left inbound PP NDB.
Hold at 4000 ft QNH over PP NDB.

TRANSITION ALTITUDE
9000

OCA (OCH)		A	B	C	D	GROUND SPEED					
STRAIGHT-IN APPROACH	Cat. I.	Press. ALT	776 (136)	784 (144)	794 (154)	801 (161)	kt	60	90	120	150
	LLZ only		900 (260)				MIN:sec	4:42	3:07	2:21	1:53
CIRCLING APPROACH		ft AMSL	1220	1220	1440	1730	Rate of descent (5,2%)				
		VIS. m	1900	2800	3700	4600					
							ft / MIN	320	480	635	795

AD 2-LHPP - ILS 34

Arrivals on 139° - 199° may enter the base turn procedure directly at 4000 ft QNH above PP NDB according to the advice of POGÁNY INFO.
Other arrivals shall enter the holding procedure.

ILS approach from PP NDB:

Initial altitude: 4000 ft QNH. Max IAS: 185 kts.

Depart PP NDB on heading 169° and descend to 2500 ft QNH.

At 8,3 NM PCS DME turn left to intercept PCS LLZ and descend to 2200 ft QNH, then follows ILS.

ILS approach from PP NDB holding:

Initial altitude: 4000 ft QNH. Max IAS: 185 kts.

At PP NDB turn left to 155° and descend to 2500 ft QNH.

At D 8,3 NM PCS DME turn left to intercept PCS LLZ and follow basic procedure.

Holding procedure:

Holding fix: PP NDB.

Left hand holding pattern.

Inbound track: 335° MAG

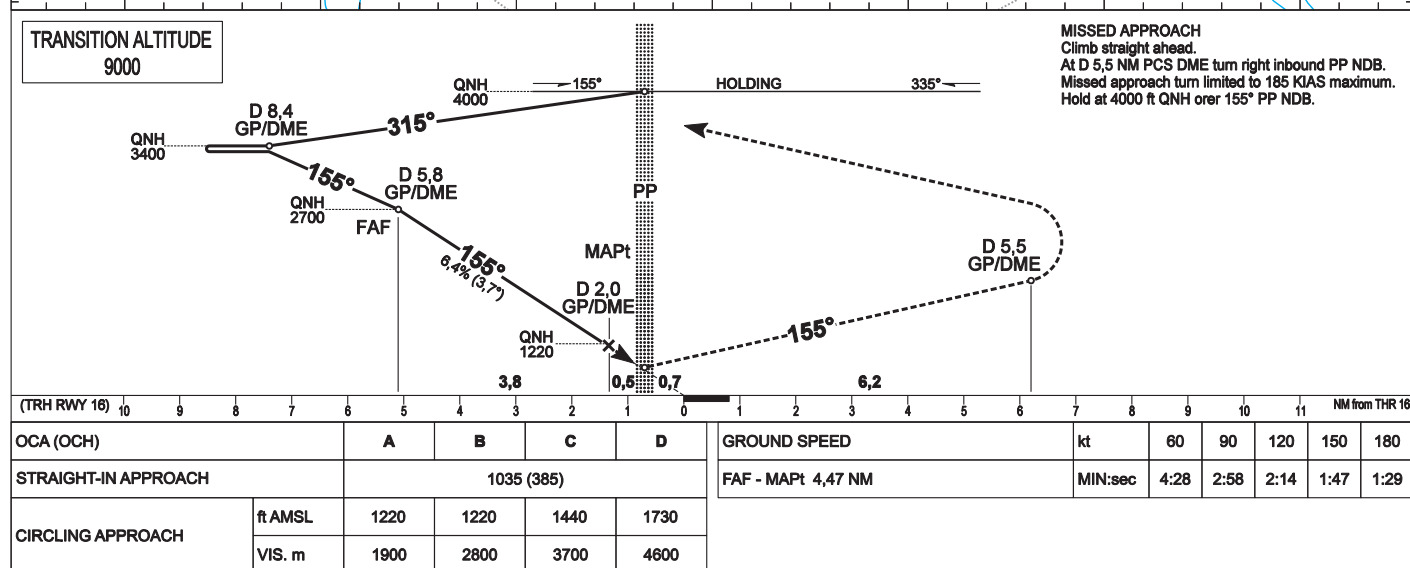
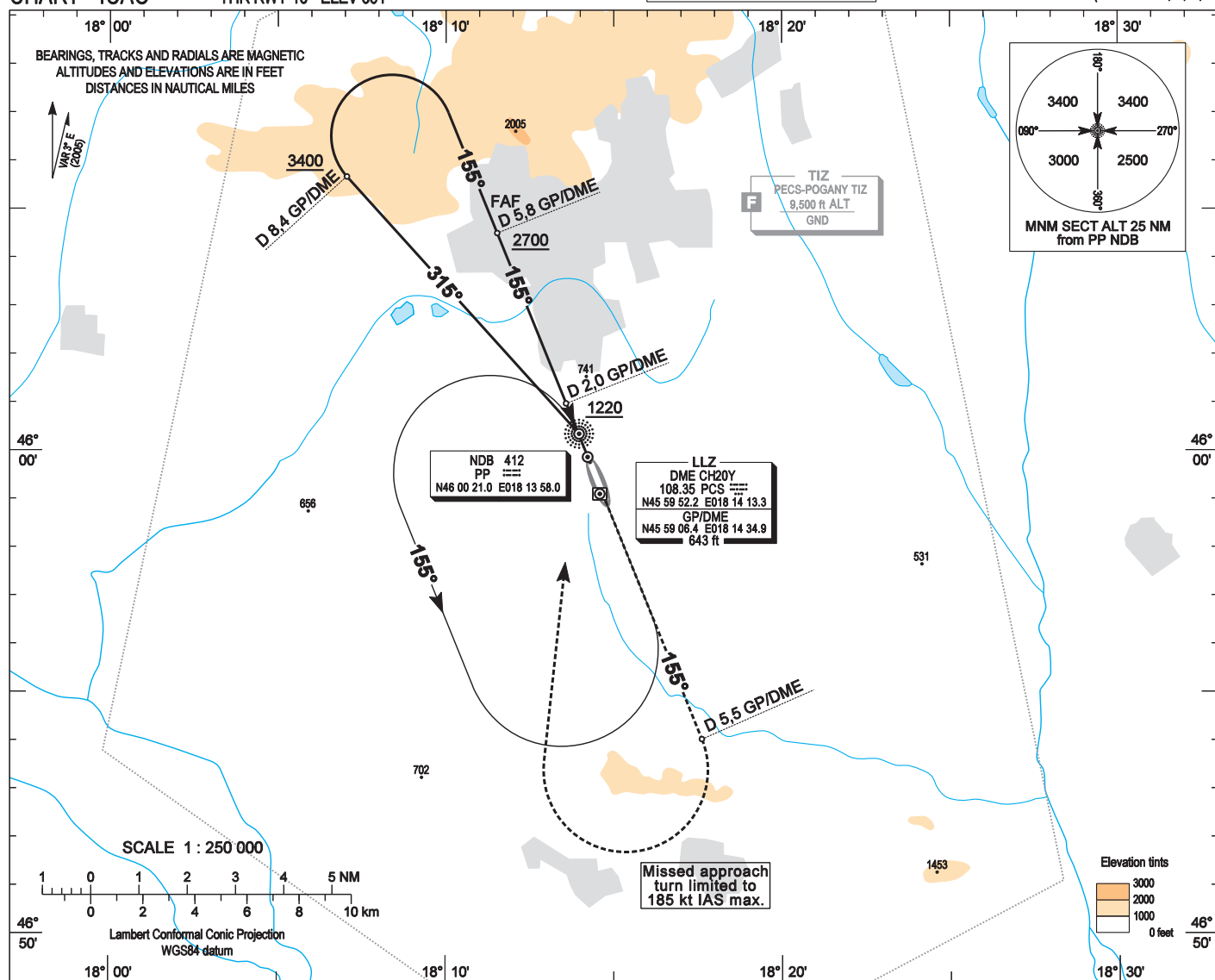
Outbound track: 155° MAG

Rate of turn: 3°/sec. or 25° bank angle
(whichever requires lesser bank)

Outbound timing: 1 min.

Minimum holding altitude: 4000 ft AMSL

AIP HUNGARY

INSTRUMENT
APPROACH
CHART - ICAOAERODROME ELEV 651
HEIGHTS RELATED TO
THR RWY 16 - ELEV 651POGÁNY INFO 126,900
BUDAPEST INFO (WEST) 125,500PÉCS/POGÁNY
NDB RWY 16
(ACFT CAT A, B, C, D)

AD 2-LHPP - NDB 16

Arrivals on 285° - 345° may enter the base turn procedure directly at 4000 ft QNH above PP NDB according to the advice of POGÁNY INFO.
Other arrivals shall enter the holding procedure.

NDB approach from PP NDB:

Initial altitude: 4000 ft QNH. Max IAS: 185 kts.

Depart PP NDB on heading 169° and descend to 2500 ft QNH.

At 8,3 NM PCS DME turn left to intercept PCS LLZ and descend to 2200 ft QNH.

Proceed to descent fix at 4,9 NM PCS DME and follows ILS.

Holding procedure:

Holding fix: PP NDB.

Left hand holding pattern.

Inbound track: 335° MAG

Outbound track: 155° MAG

Rate of turn: 3°/sec. or 25° bank angle
(whichever requires lesser bank)

Outbound timing: 1 min.

Minimum holding altitude: 4000 ft AMSL

Final approach descent: 3,66°



THE PAGE INTENTIONALLY LEFT BLANK